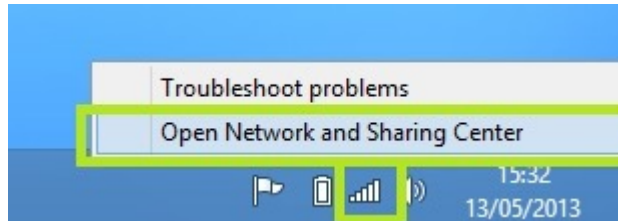
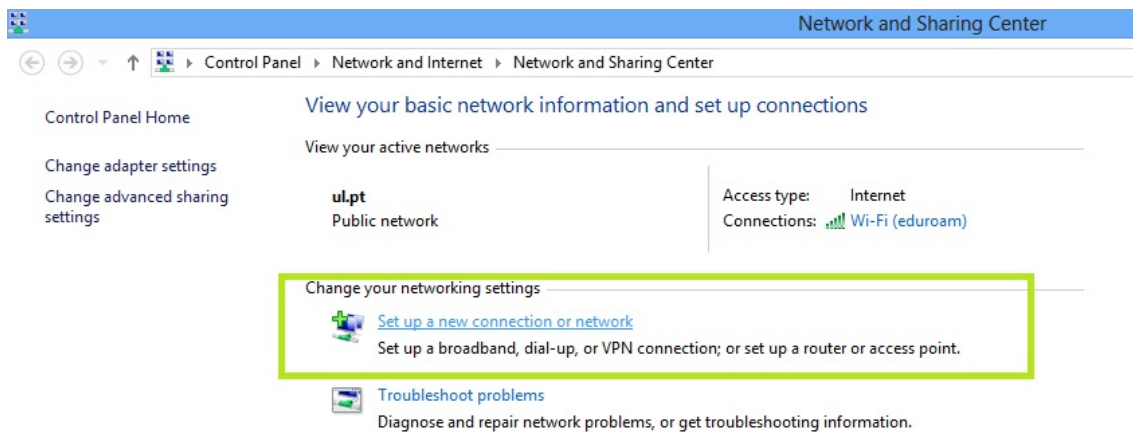


Manual de configuração de VPN L2TP em Windows 8

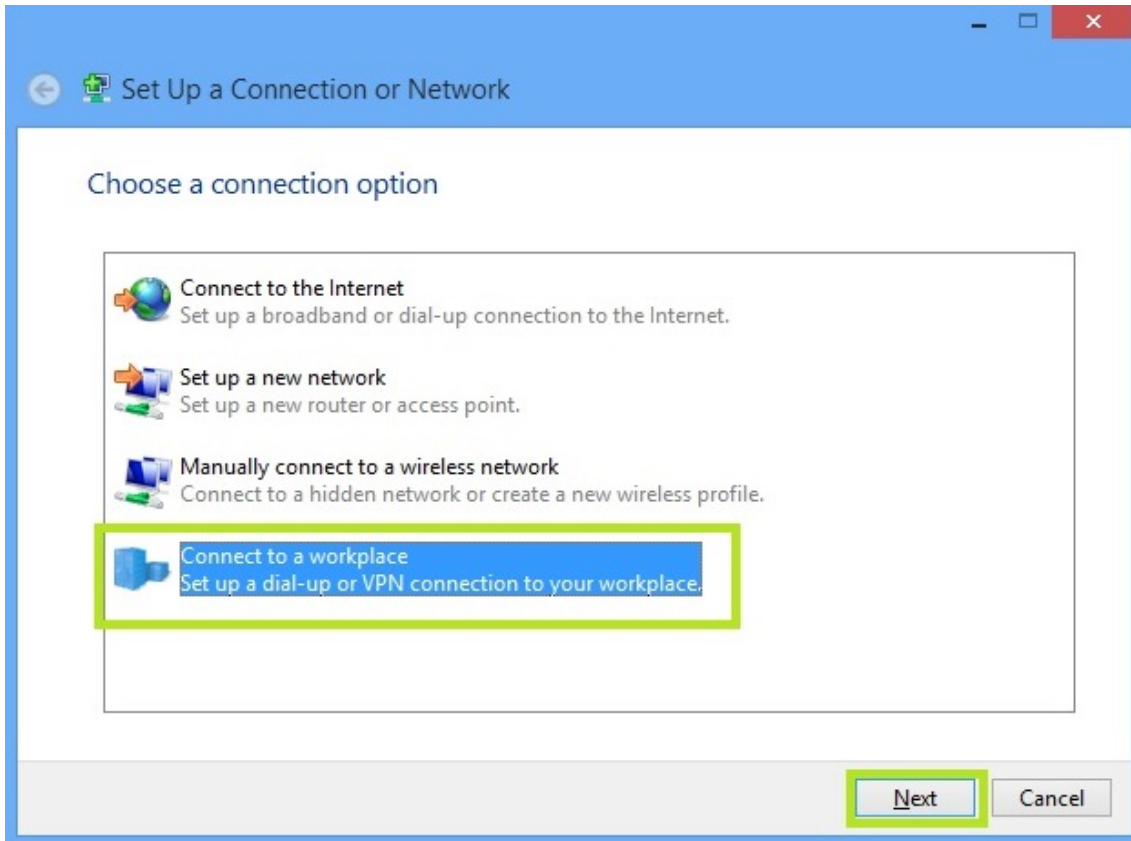
1. Abrir o “*Network and Sharing Center*”:
 1. Abrir o menu de contexto através do ícone de rede
 2. Selecionar “*Open Network and Sharing Center*”



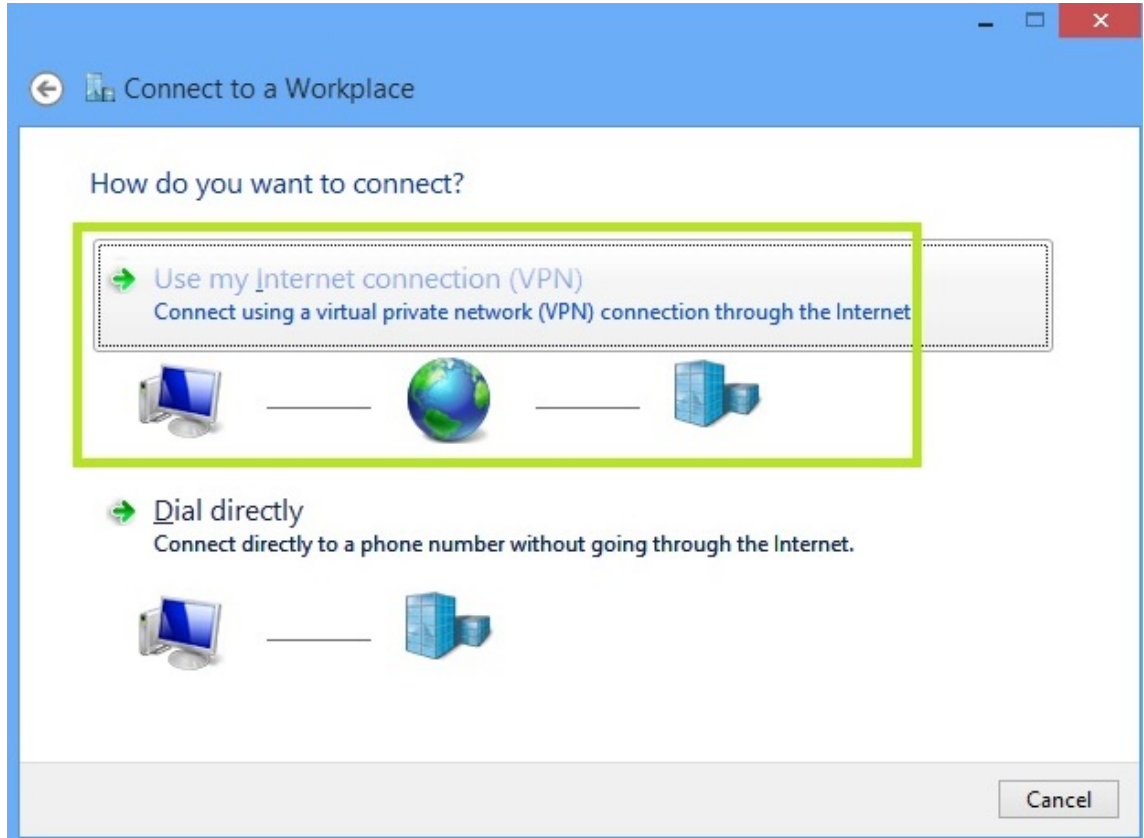
2. Selecionar “*Set up a new connection or network*”:



3. Selecionar “*Connect to a workplace*”:



4. Selecionar “Connect using a virtual private network (VPN) connection through the Internet”:



5. Configure a rede de acordo com a imagem e seleccione “Create”
 - 1) Internet address: vpn.ulisboa.pt
 - 2) Destination name: Ligação VPN

Connect to a Workplace

Type the Internet address to connect to

Your network administrator can give you this address.

Internet address: vpn.ulisboa.pt

Destination name: VPN Connection

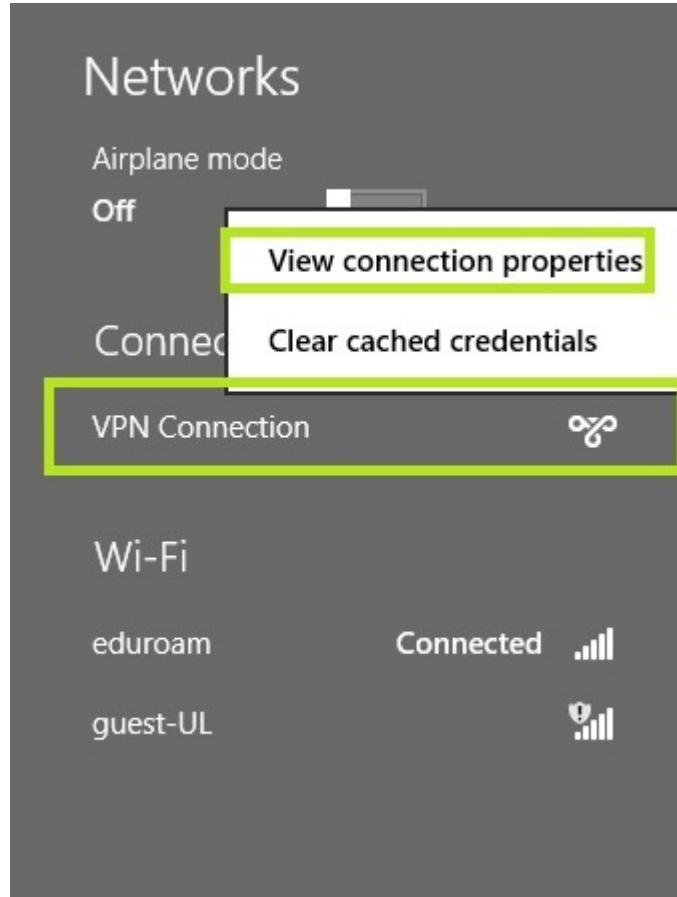
Use a smart card

Remember my credentials

Allow other people to use this connection
This option allows anyone with access to this computer to use this connection.

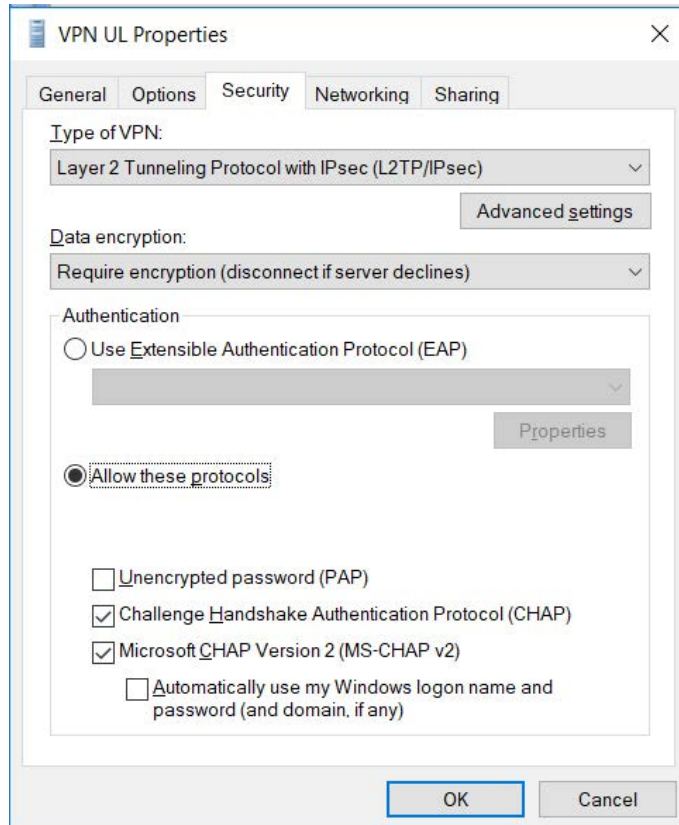
Create Cancel

6. Clique no ícone de rede, e com o botão direito do rato em cima da “VPN Connection” clique em “View connection properties”:

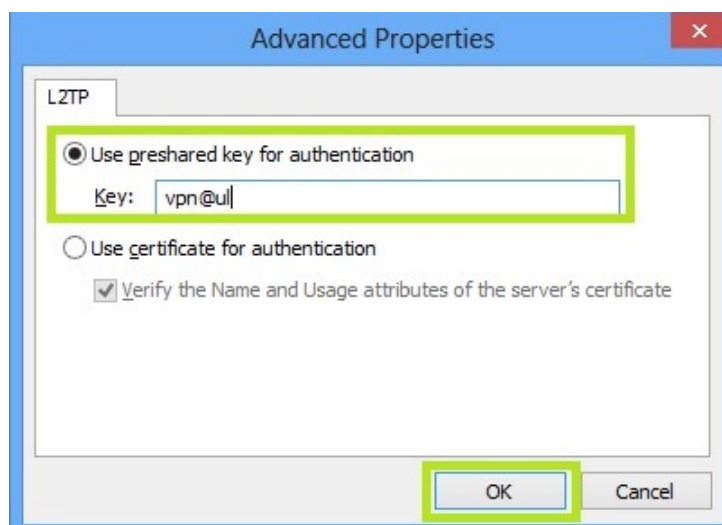


Manual de configuração de VPN L2TP em Windows 8

7. No separador “Security”, no Type of VPN escolha a opção “Layer 2 Tunneling Protocol with IPsec (L2TP/IPsec)” e clique em “Advanced settings”::



8. De seguida no campo “Key” coloque **vpn@ul**:



9. Por último clique em “Connect”:

